

Strong in winter



MPS530 Sibir Snow VAN For transporters and vans

- ▶ Good traction on snow
- ▶ Safe cornering
- ▶ Excellent protection against aquaplaning

Matador. A brand of Continental.

 **Matador**[®]

MPS530 Sibir Snow VAN

For transporters and vans

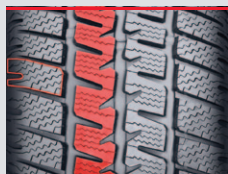


Technical Highlights



Good traction on snow

Sinus-waved sipes and many strong and efficient interlocking grip edges improve braking and traction on snow.



Safe cornering

Compact shoulder blocks provide excellent cornering stability.

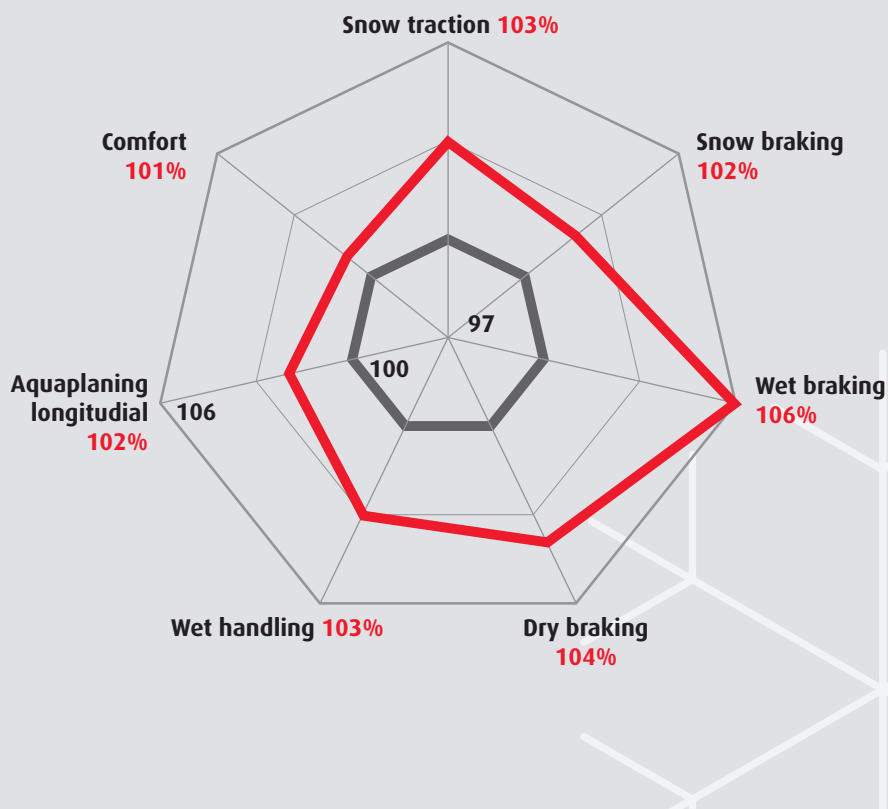


Excellent protection against aquaplaning

Wide water displacement grooves guide the rainwater quickly away from the contact area. In this way the tyre remains firmly on track even when aquaplaning, and also performs very well on slush.

Performance diagram

- MPS530 Sibir Snow VAN
- MPS520 Nordicca VAN = 100%



Size range

Size	LI single / dual mounted	SI	EU tyre label			
					dB	
14"						
185 R14 C	102/100	Q	E	C	73	2
195 R14 C	106/104	Q	E	C	73	2
195 R14 C	106/104	Q	E	C	73	2
165/70 R14 C	89/87	R	E	C	73	1
175/65 R14 C	90/88	T	E	C	73	2
15"						
195/70 R15 C	104/102	R	E	C	73	2
205/70 R15 C	106/104	R	E	C	73	2
215/70 R15 C	109/107	R	E	C	73	2
225/70 R15 C	112/110	R	E	C	73	2
205/65 R15 C	102/100	T	E	C	73	2
16"						
195/75 R16 C	107/105	R	E	C	73	2
205/75 R16 C	110/108	R	E	C	73	2
215/75 R16 C	116/114	N	E	C	73	2
225/75 R16 C	121/120	R	E	C	73	2
195/65 R16 C	104/102 (100)	T (T)	E	C	73	2
205/65 R16 C	107/105 (103)	T (T)	E	C	73	2
215/65 R16 C	109/107 (106)	R (T)	E	C	73	2
225/65 R16 C	112/110	R	E	C	73	2
235/65 R16 C	115/113	R	E	C	73	2
235/65 R16 C	115/113	R	E	C	73	2
195/60 R16 C	99/97	T	E	C	73	2
195/60 R16 C	99/97	T	E	C	73	2

LI = Load index | SI = Speed index | EU tyre label categories: = Fuel consumption, = Wet grip, dB = Value in decibels, = Class